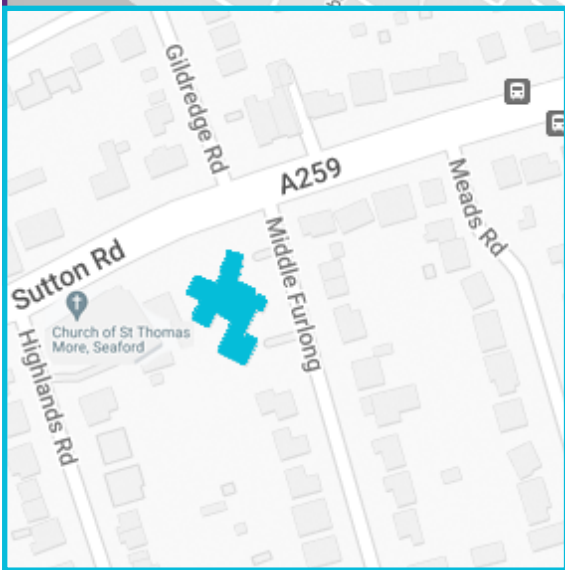
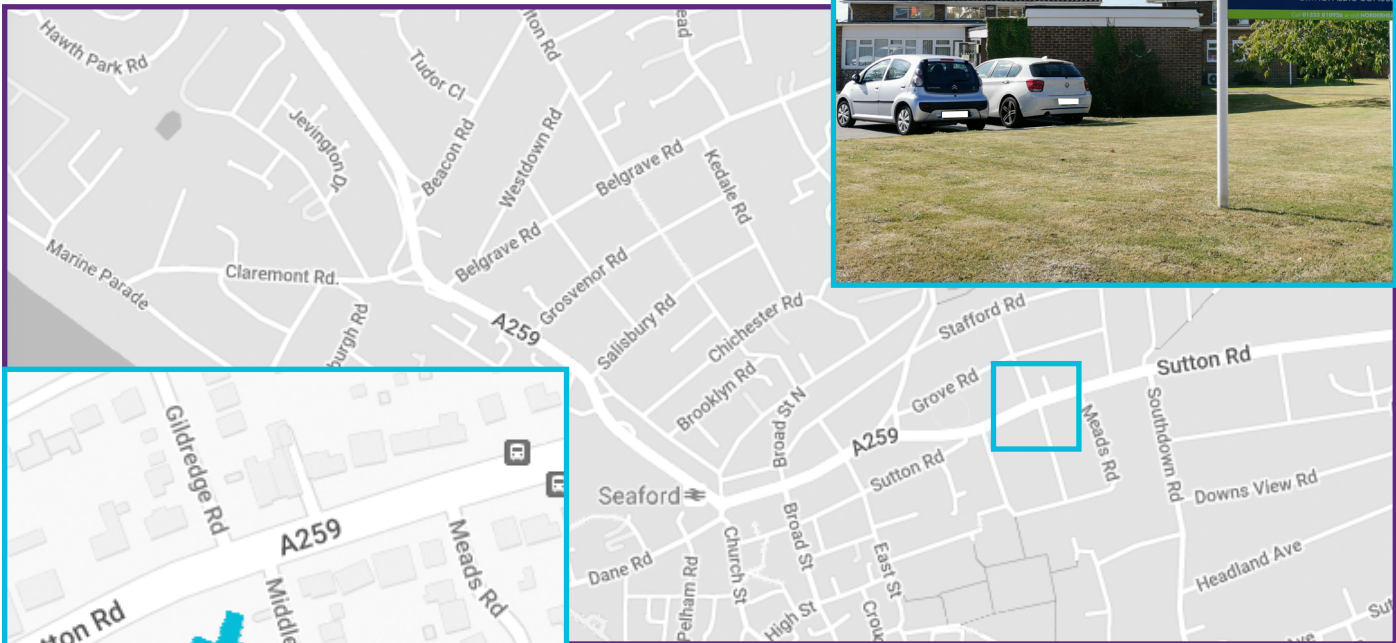


You will be visiting our MSK community clinic located at:

**Horder Healthcare Seaford**  
**Sutton Road**  
**Seaford**  
**East Sussex**  
**BN25 1SS**



<https://sussexmskpartnershipeast.co.uk>



[sussexmskeast.contact@nhs.net](mailto:sussexmskeast.contact@nhs.net)



0300 300 0003

### How to find us:

We are located on the corner of Sutton Road (A259) and Middle Furlong.

### By bus:

There are several bus routes that drop you within a short walking distance of the clinic. The nearest bus stops are 'War Memorial' and 'Sutton Rd.'

### By car:

There is easy access from the free on-site car park including two dedicated disabled visitor spaces and plenty of free on-street parking. We are located in a residential area and ask that all visitors are considerate of the surrounding residents.

### By train:

The nearest train station is Seaford Train Station, which is just under 0.5 miles away. You can follow the main road for a short walk, or bus journey to the above noted stations.



@SMSKPE